

aquataps

THE FILTERED TAP COMPANY

ULTRA MODEL

Video Guide



Installation & User Guide

THE TAP FOR ALL

WELCOME TO YOUR BRAND NEW



aquatap **ULTRA**

4 in 1 BOILING WATER TAP
WITH PULL OUT SPRAY

IMPORTANT NOTICE:

When correctly installed and maintained with care, your Aquataps boiling water tap will give you many years of trouble free service. **This product is not for outdoor use.** This product can cause harm if installed incorrectly. Should you decide to install this product yourself, please refer to the instructional videos or guide on our website. Alternatively, please contact a professional installation service.

Please read and fully understand all installation instructions before installing and using this application. If in doubt contact a qualified plumber or retailer to assist.

Check that no parts are missing or damaged. If parts are missing do not install and contact our customer services.

A standard 220/240v grounded 13 amp switched electrical outlet is required under the sink for the appliance electrical power. The Aquataps instant hot water tank is only intended for use with compatible Aquataps boiling water taps. Using this tank with any other tap will invalidate the warranty.

Do not plug in the tank until all water connections have been checked, is watertight and the tank has been filled. The tank is filled once water starts to pass out the tap spout. It is recommended before using the tank, to flush through several litres of water to remove any air in the system when installing.

Please note, that in order to avoid having pressurised boiling water and to comply with UK byelaws, this is an open vented system. In order to ensure the instant hot water tank delivers the highest quality drinking water and is protected from limescale build up, the water filter must be replaced **every 6 months**. Failure to do so may invalidate your product warranty.

Contact us at **info@aquataps.co.uk** or these can be purchased online at **www.aquataps.co.uk** or by calling **01268 727823**



- To prevent against electrical shock do not place the hot water tank near or in water or other liquids and install on a flat surface.
- Do not install in environments above 35°C or exposed to freezing.
- Can be used by children 12+ or people with learning difficulties if they have been given supervision or instructed on the hazards involved.
- Do not operate or install electrical connections with wet hands
- Do not install the appliance if it appears damaged in any way
- Only use power lead supplied with the product. If the power lead is damaged, stop using immediately and contact customer services for a replacement.
- Do not remove tank casing, this product is not serviceable and should be returned to the manufacturer in the event of a fault.
- Do not modify the tank or remove the plug as this will invalidate the warranty and could cause serious injury. Design for UK 3 pin socket only.
- If the unit is unused for extended periods of time it should be unplugged, drained, re-filtered and refilled.
- The tap and water tank can be cleaned with a lint free damp cloth.
- Do not use any abrasive or corrosive cleaning products as this will damage the surface of the product.
- Replace the filter every 6 months



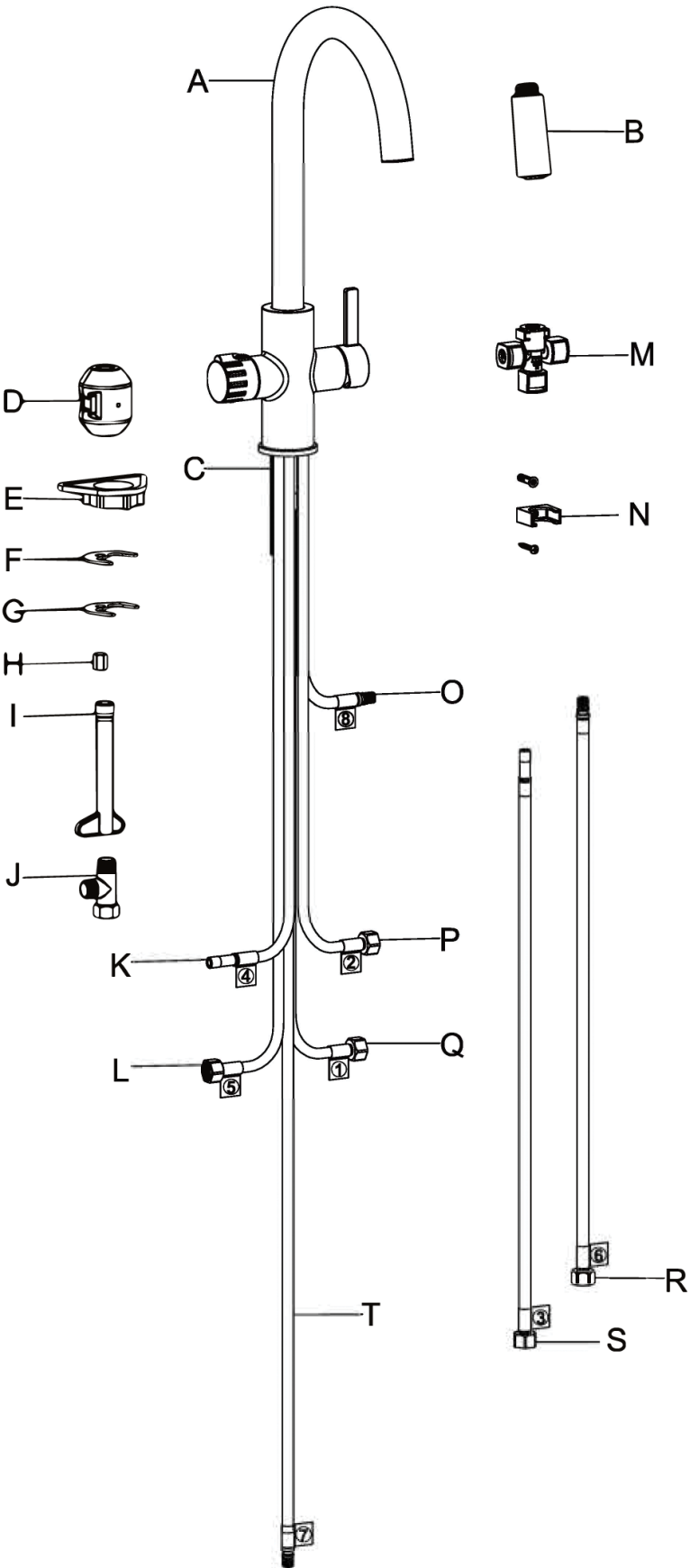
aquatap **ULTRA**

4 in 1 BOILING WATER TAP
PULL OUT SPRAY

- | | |
|---------------------------------|--|
| 1x A Faucet | 1x K Drinking Water Hose Outlet |
| 1x B Spray Head | 1x L Boiling Water Supply Hose |
| 1x C Screw Stem | 1x M Three-way Quick Connector |
| 1x D CounterWeight | 1x N Wall Mount With Screw |
| 1x E Triangle Cushion | 1x O Outlet Hose |
| 1x F Rubber Washer | 1x P Hot Supply Hose |
| 1x G Metal Washer | 1x Q Cold Supply Hose |
| 1x H Mounting Nut | 1x R Boiling Water Outlet Hose |
| 1x I Wrench | 1x S Drinking Water Outlet Hose |
| 1x J Three-way Connector | 1x T Pull-Down Hose |

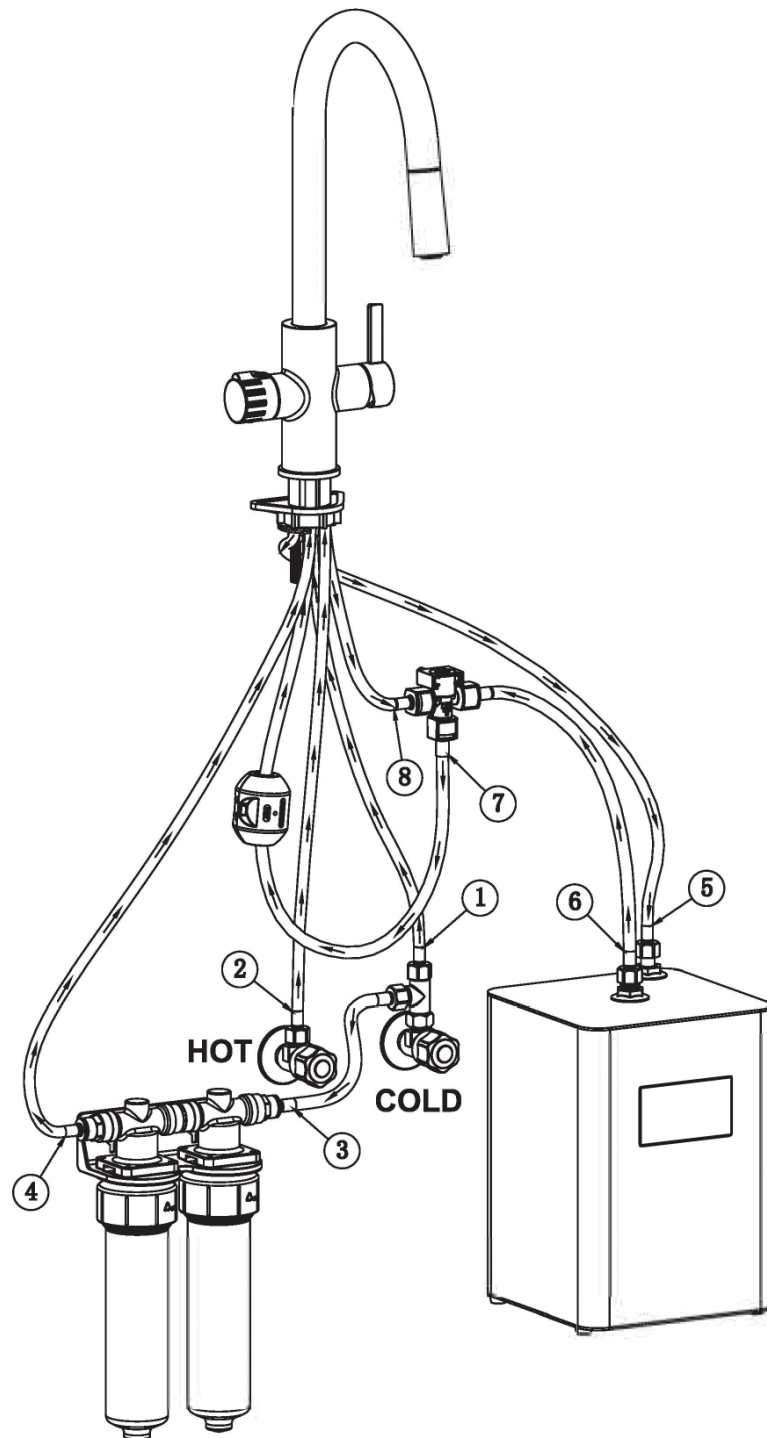
aquatap ULTRA

4 in 1 BOILING WATER TAP
PULL OUT SPRAY

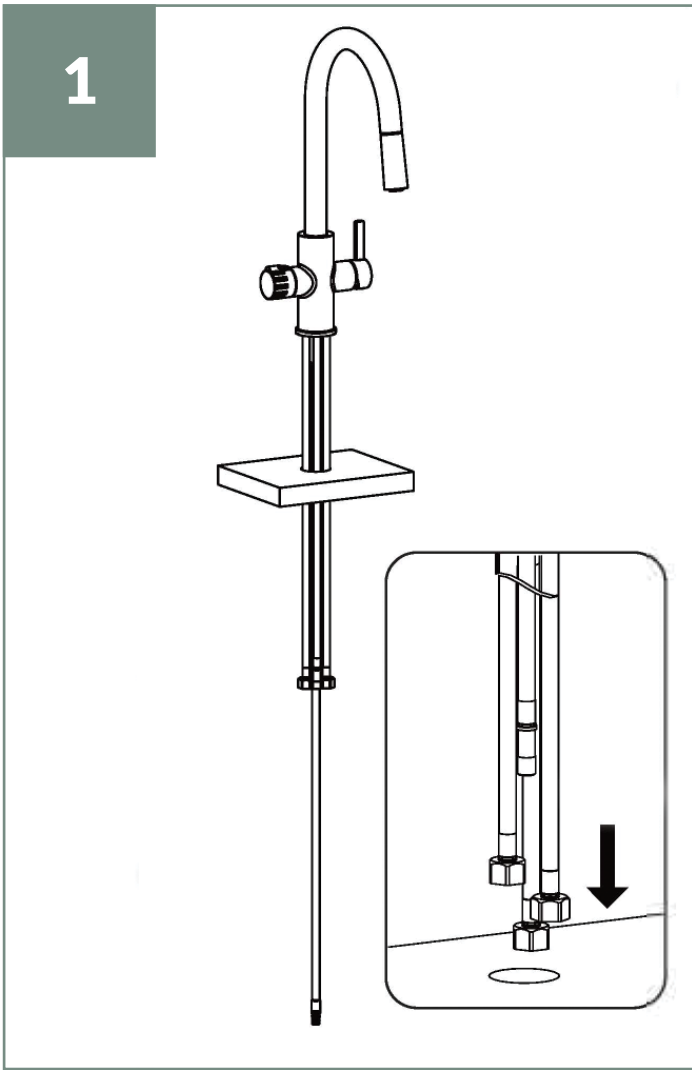


aquatap ULTRA

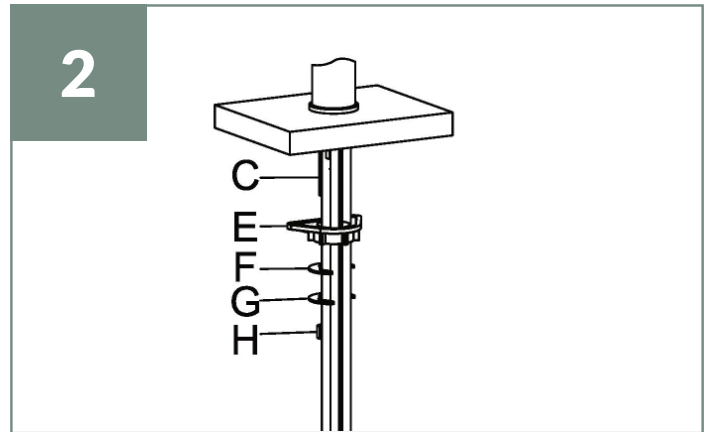
4 in 1 BOILING WATER TAP
PULL OUT SPRAY



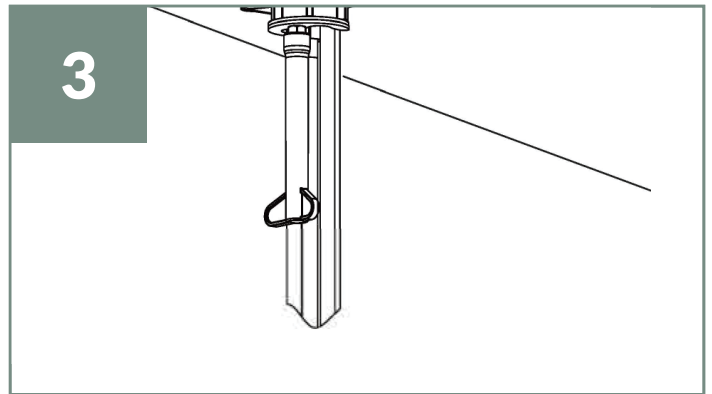
TOP TIP : Pass the 3 hoses with nuts through the surface hole first and then pass the 3 hoses without nuts to help with your installation.



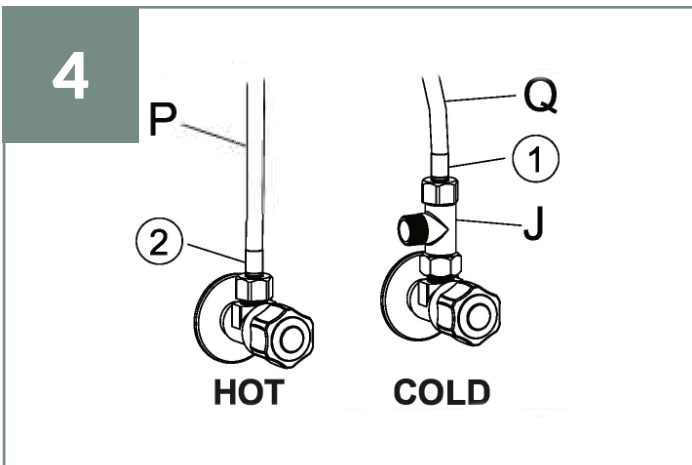
1 Taking the faucet from packaging box and place six hoses into mounting hole one by one.



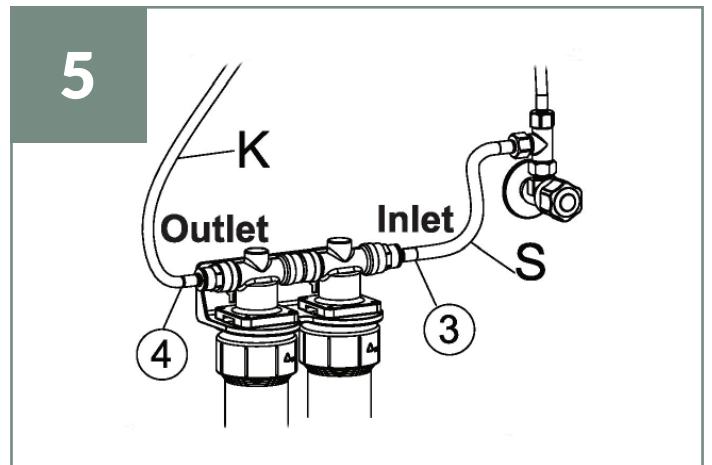
2 Placing six hoses through the triangel cushion (E) firstly, and then using the mounting nut (H) to fix rubber washer (F) and metal wahser (G) on screw stem (C).



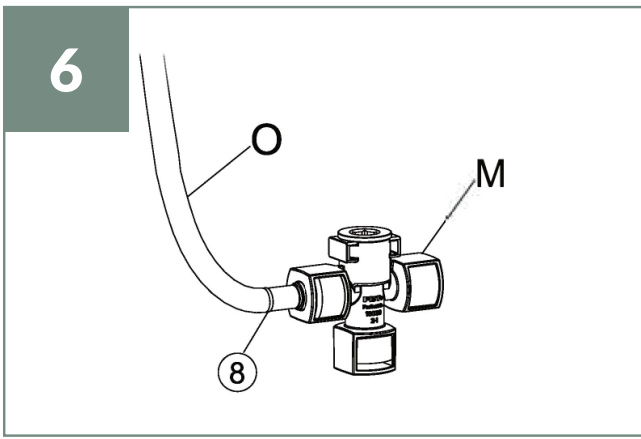
3 Adjusting the faucet at correct direction.and tighten the mounting nut (H) with wrench (I).



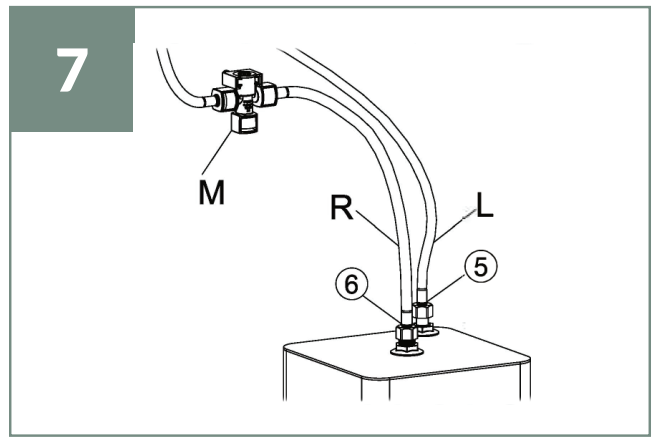
4 Connecting the three-way connector (J) to the cold valve. Then connectting the cold supply hose (Q) (blue label) to one side of three-way connector (J), and hand tight them firmly. Working same as cold supply hose, connectting the hose supply hose (P) (orange label) to other side of three-way connector (J).



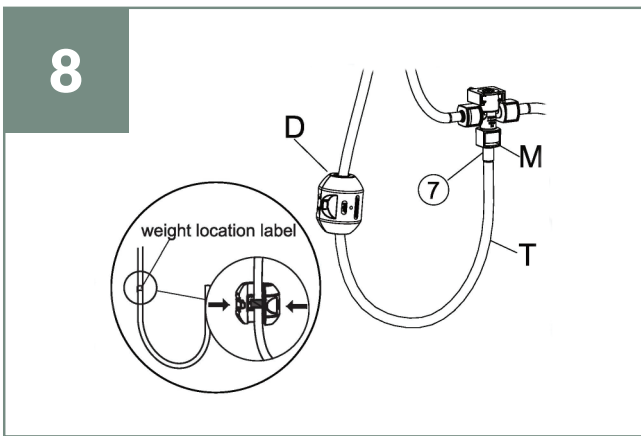
5 Connecting one end of drinking water supply hose (S) (blue label) to three-way connector and fitting the other end of drinking water supply hose into filter housing inlet. Fitting the Drinking water outlet hose (K) (green label) into filter housing outlet.



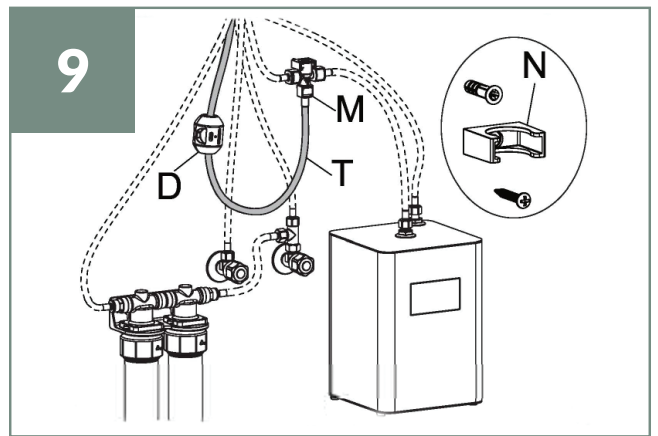
Connecting the three-way quick connector (M) to outlet hose (O) (white label).



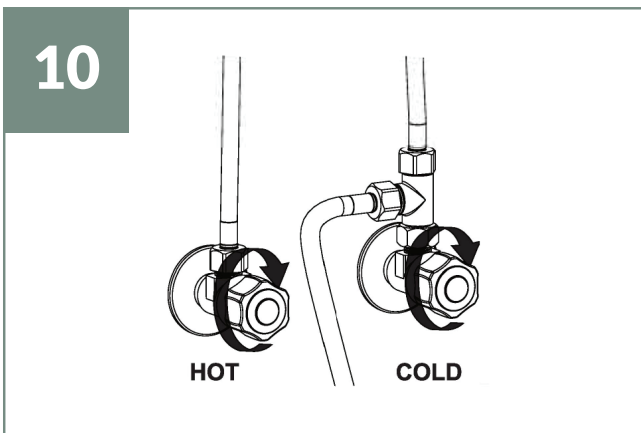
Connecting boiling water supply hose (L) (green label) to the inlet of boiling water tank. Connecting one end of Boiled water outlet hose (R) (red label) to outlet of boiling water tank, and connecting the other end of hose (R) to another adapter of three-way quick connector (M).



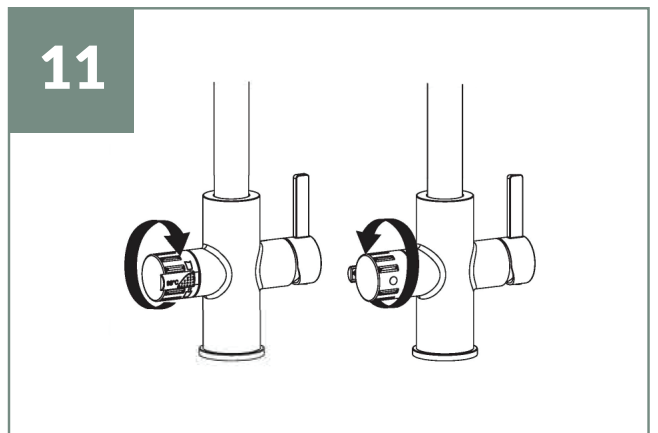
Attach the pull-down hose (T) (white label) to the adapter at the bottom of the three-way quick connector (M). Installing the counterweight (D) on the marked position of pull-down hose.



Tidy up all hoses, so they don't get tangled up. Please leave enough space for the pull-down hose (T) with counterweight (D) to move up and down without interference to ensure the pull down function. The wall mount can be screwed to the wall, and three-way quick connector can be attached to the wall mount.



Turn on the water supply and check the water connections for leaks. Test system for leaks, and purge system. Run a minimum of 20 litres of water through the tank to remove any air.

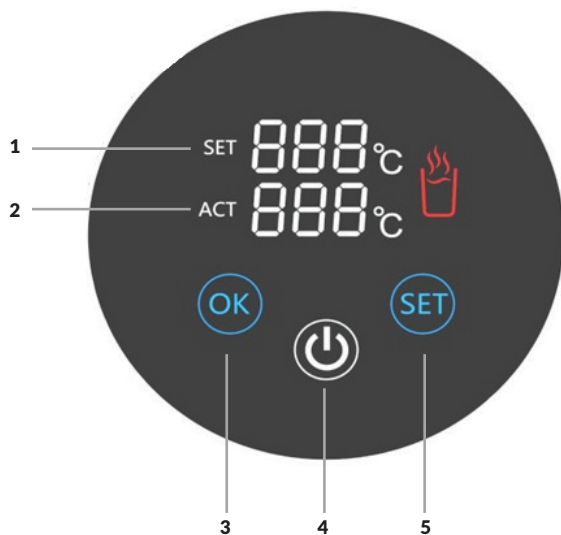


Sliding out the pick on the left round handle and turning the round handle clockwise at the same time, it will come out the boiled and filtered water. And turning the round handle counter-clockwise, it will come out the cold and filtered water.

aquatap ULTRA

Boiling Water Tank

OPERATION INSTRUCTIONS - INSTANT HOT WATER TANK



1. Set Temperature
2. Actual Temperature
3. 'OK' Button
4. Power Button
5. 'Set' Button to adjust temperature

INSTRUCTIONS:

- (i) Fill the boiler with water by running the boiling water side on the tap
- (ii) Press and hold the power button (4) for **three seconds**
- (iii) The LCD ring around the outside will now illuminate

NOTE: Using the + and - buttons of the screen, the tank can be preset to 55°C, 65°C, 75°C, 85°C, 90°C, 95°C, 96°C, 97°C or 98°C.

aquatap ULTRA

TROUBLESHOOTING

Problem	Likely Fault(s)	Solution
Water and steam spitting from tap	Unit is boiling.	Reduce the water temperature on the tank display to a lower setting. Check aerator is not blocked by unscrewing top nozzle. Aerator should be detached from silicone tube and cleaned if required.
Unit not heating.	Issue with power supply	Make sure the fuse has not blown, or circuit breaker tripped.
Unit not heating.	The electronic display has not been powered up.	Turn on power and touch the on/off button. Set the required temperature using + or - button
Dispensed water is too hot.	Water temperature setting on display panel is set too high.	Reduce required temperature using - button.
Water is dripping from the tap.	The expansion chamber isn't draining the system correctly due to very small draw off of water.	Draw off 0.5L of water to clear and prime the system. Avoid less than 150ml draw-offs of water.
Slow flow from the spout.	Water filter may be blocked from impurities in the inlet mains water	Replace filter cartridge.
Water does not flow straight away.	The application is designed for non-pressurised operation which will cause a slight delay before water is dispensed.	No action required.
No water coming from the tap.	Water valve has been shut off.	Check all the valves are open.
No water coming from the tap.	Inlet pipes are twisted or blocked.	Ensure the pipes are not twisted or kinked to restrict flow. Check aerator is not blocked by unscrewing top nozzle. Aerator should be detached from silicone tube and cleaned if required.

aquataps
THE FILTERED TAP COMPANY

CUSTOMER CARE

Tel: 01268 727823

Email: info@aquataps.co.uk

www.aquataps.co.uk